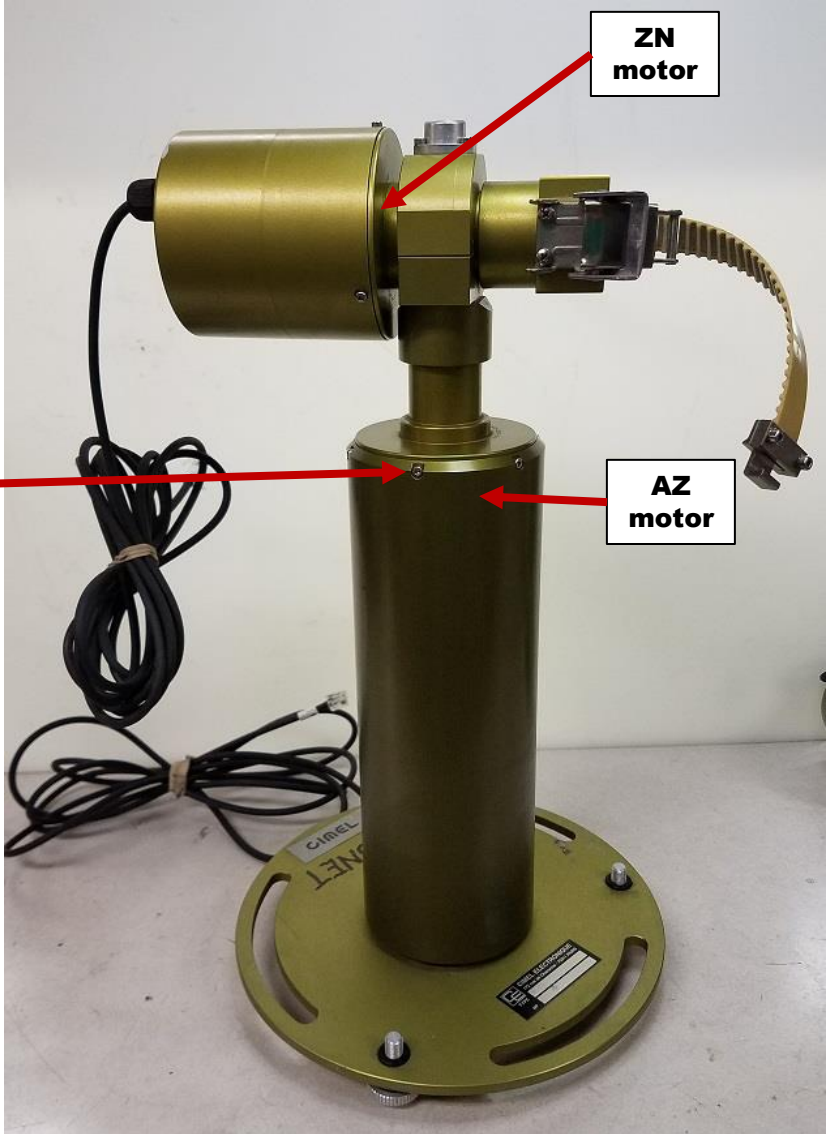
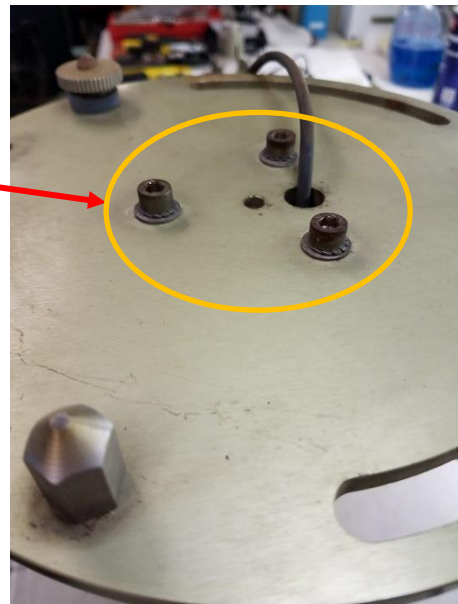


**Step 1**  
Remove the 6 screws on the AZ housing with a 2mm hex wrench and gently remove housing from motor assembly



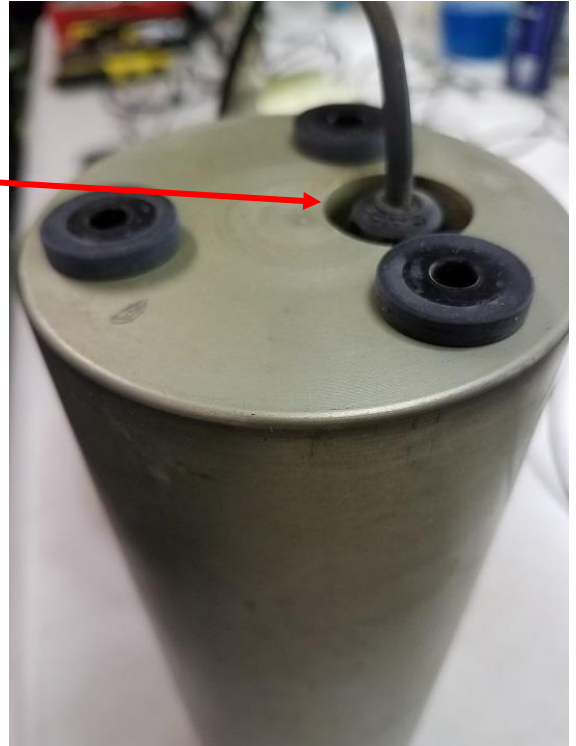
**STEP 2**

Remove the 3 5mm cap screws to remove the base



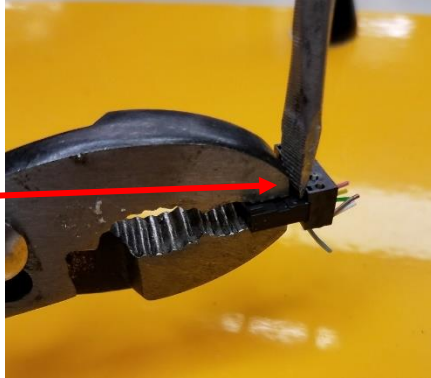
**STEP 3**

Remove the cable gland cap and feed the AZ cable into the hole



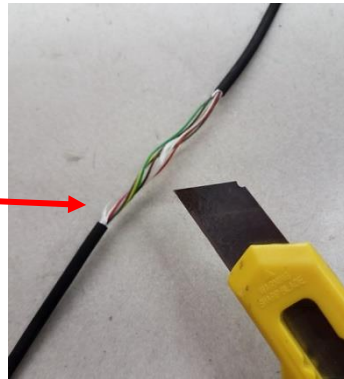
**STEP 4**

Gently pry the top up on the connector and separate the two pieces enough to remove the wires



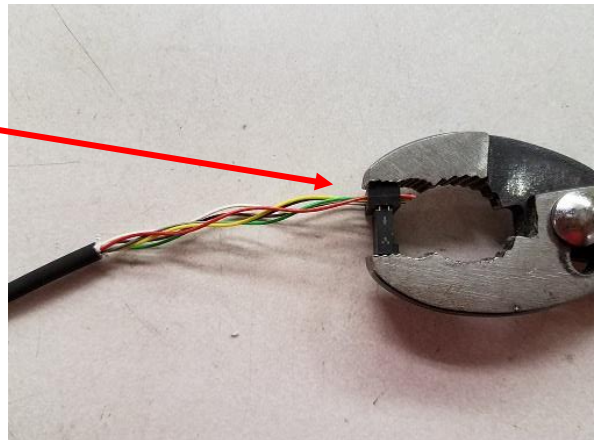
**STEP 5**

Carefully cut the cable sheathing to expose wires

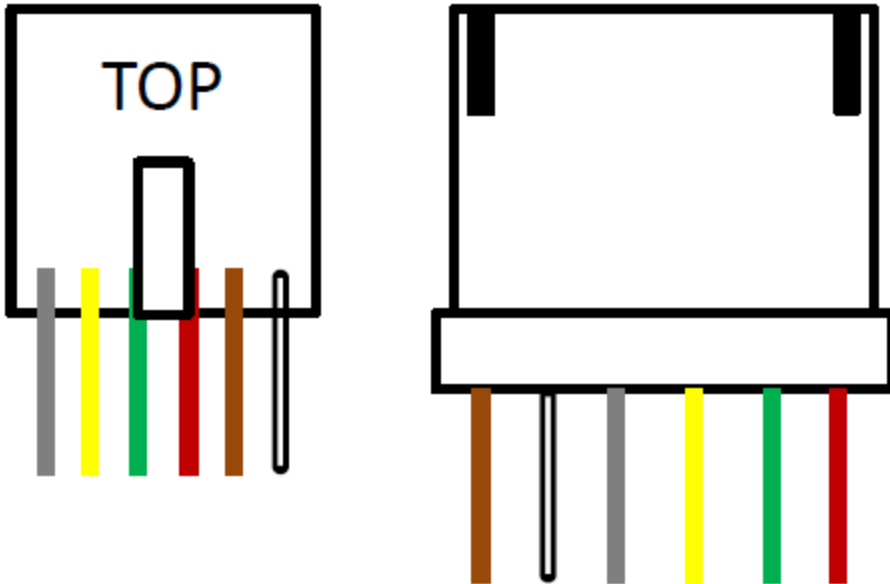


**STEP 6**

Insert the wires into the connector and press the connector pieces together



# NEW ROBOT MOTOR



LOCATING TABS

